

ACADEMIC ENGAGEMENT FOR OUR CHANGING TIMES

INAUGURATION DAY DIALOGUE WITH BERKELEY FACULTY

A forum to explore the effect of the changing political times on our work and priorities:

- What types of research and knowledge creation may now be needed?
- What policy efforts should we pursue?
- How can we best support advocacy and community engagement?
- What is required of us as public intellectuals?
- **Plus Q&A**

1/20/2017

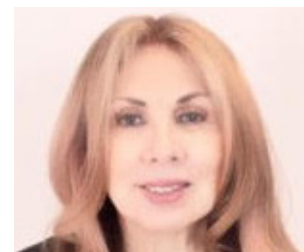
2:00 – 3:30 pm
Banatao Auditorium
310 Sutardja Dai Hall
Wheelchair Accessible

SPONSORED BY AMERICAN CULTURES, THE DIVISION OF EQUITY AND INCLUSION, AND THE HAAS INSTITUTE FOR A FAIR AND INCLUSIVE SOCIETY



Melissa Murray

Berkeley Law Professor and Interim Dean



Kris Gutierrez

Graduate School of Education



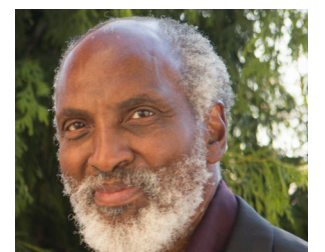
Na'ilah Nasir

African American Studies, Education, and Vice Chancellor, Equity & Inclusion



Hilary Hoynes

Goldman School of Public Policy, Economics



John A. Powell

Law, African American, and Ethnic Studies, and Director, Haas Institute



Taeku Lee

Political Science, Law, and Associate Director, Haas Institute



Mark Richards

Earth and Planetary Science